

SQL SimpleView

System Requirements

System

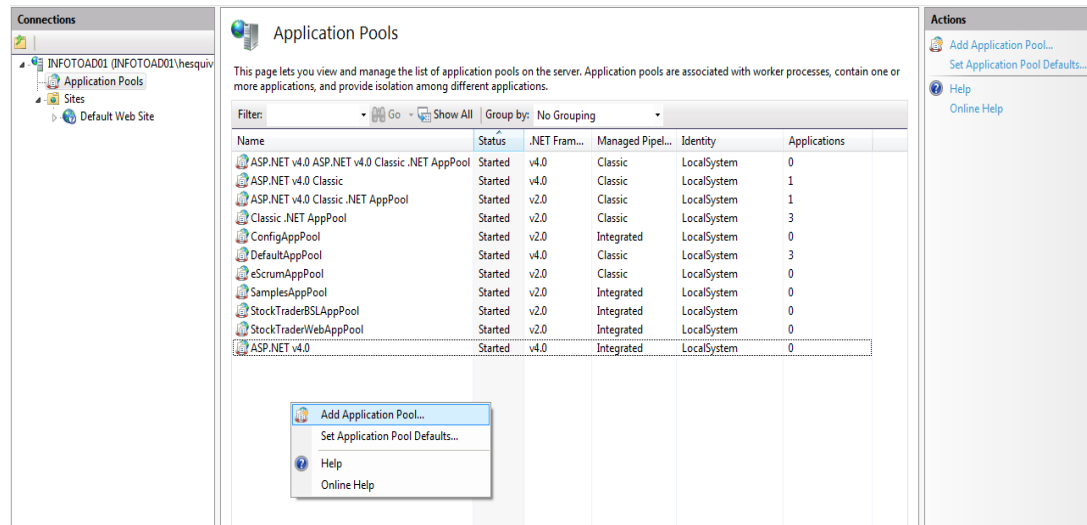
For both 32-bit and 64-bit editions of SQL Server 2008 R2, the following apply:

- Supported Operating Systems are Windows Server 2003 SP1+, Windows Server 2008, Windows Server 2008 R2.
- SQL Server 2005, SQL Server 2008 and SQL Server 2008 R2 – Enterprise or Standards editions.
- \geq 50MB of **Install** storage space.
- \geq 100MB of **Data** storage space. *Note: depending on usage, storage requirements will change over time.*
- \geq 1 GB RAM
- You must have a live Internet connection.
- .NET Framework v4.0.30319
- Internet Information Services (IIS) 6.0 or greater.
- You must have administrator privileges on your computer to run the Web Platform Installer.

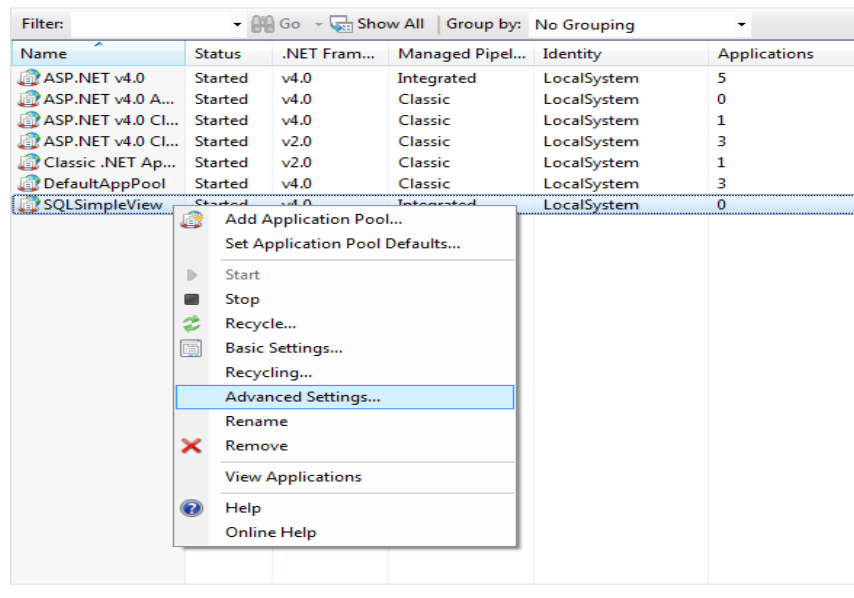
Install

Prepping the installation

1. Create a new **Application Pool** from within Internet Information Services (IIS) Manager.
 1. Open Internet Information Services Manager – Start >> All Programs >> Administrative Tools >> **Information Services Manager**.
 2. From the Connection Pane, click on **Application Pools**.
 3. Place your cursor in the Application Pools list view and right click to open the Context Box; click **Add Application Pool...** from the list.



4. From within the Add Application Pool dialog, enter the following:
 - Name = SQLSimpleView
 - .NET Framework Version = .NET Framework v4.0.30319
 - Managed pipeline mode = Integrated
 - Start Application Pool Immediately = Checked
5. Click OK when you have finished creating the Application Pool.
6. Right click on the newly create Application Pool and select **Advanced Settings**.



7. Find the **Identity** property and change the account to a local admin account, or an account with elevated permissions. Follow the wizard to complete this step.
8. Click OK when you are done.
2. You're done with the Prep!

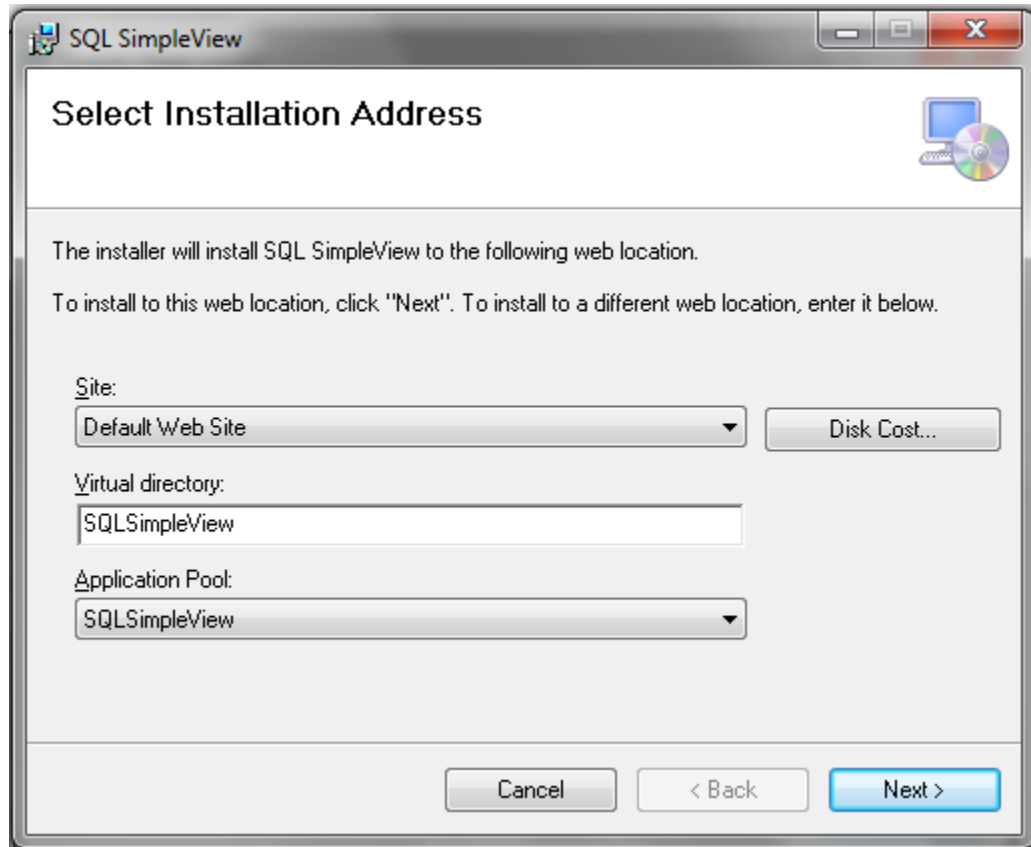
Installation

1. Run the **SV_WebSetup_x86.msi** or **SV_WebSetup_x64.msi** and follow the wizard.
2. Read the License Agreement and accept the terms to proceed forward.



3. Select your Installation Address – Web Site, Virtual Directory and Application Pool. Click **Next** when you are done.

Note: Do not attempt to install this application under a SharePoint Web Site. If your Default Web Site **Application Pool** isn't running .NET Framework 4.0, you will need to create a new Web Site and have set its **Application Pool** to run using .NET Framework 4.0.



4. Change the Application Pool to **SQLSimpleView** from the dropdown list.
5. Set your Database Connection credentials – Server Name, User ID and Password. Click **Next** when you are done.
 - Configure Database Connection. The credentials passed must have privileges to create a database objects (i.e., database, table, stored procedure and user account). For example, you could use the *System Administration (sa)* account to create the SQL SimpleView database.

Note: The Database Server Name defaults to (local); you may change this to the Server name of your choice. When entering the password, it will remain in free-form text while typing it in. The password is used only for installation purposes and not stored.

Simple View

Database Connection

Please enter Server and User Credentials

Server Name:

User Name:

Password:

Cancel < Back Next >

6. Confirm the Installation and click **Next** to run install. When the install is complete click **Close** to complete the process.
7. Open up Internet Explorer and navigate to the location of SQL SimpleView. For example, <http://localhost/SQL SimpleView>
8. You may now query and filter views. Please see the online help for more information on using SQL SimpleView.

Configuration

1. To configure SQL SimpleView Administration page, a user must be a member of the server Local Administrators group or a member of Network Administrators group.
2. Before users can use SQL SimpleView, the Admin must create one or more **Database Server Connections (DSC)**. The DSC will attach to the master database. The purpose of attaching to the master database is to query list of available databases on the database server. The DSC only has Read permission.

The Administration Configuration allows Administrators of SQL SimpleView an easy way of making changes to application global properties. This section will define each of the fields found from within the Administration Configuration section.

Click on the Administrator tab of SQL SimpleView. The admin.aspx page should render; you should see the following group "Configuration" in your browser.

Configuration:

Default SQL Server:	localhost
Helpdesk Support Email:	support@domain.com
Mail Server:	127.0.0.1
Mail Server Port:	25

Image 1.

Properties and Descriptions

Field	Description
Default SQL Server	The default SQL Server. For example: localhost
Helpdesk Support Email	The email address for support. For example: support@domain.com
Mail Server	The default SMTP Server. For example: 127.0.0.1
Mail Server Port	The SMTP Port. For example: 25

Operations

- Click the **Cancel** button to cancel edits and refresh page.
- Click the **Save** button to save property changes to application.

Server List

Server List allows the Administrator to manage Database Server Connections. The DB Server Connect tool is very similar to how you connect to a server from within Microsoft SQL Server Management Studio today.

Click on the Administrator tab of SQL SimpleView. The admin.aspx page should render; you should see the following group "Server List" in your browser.

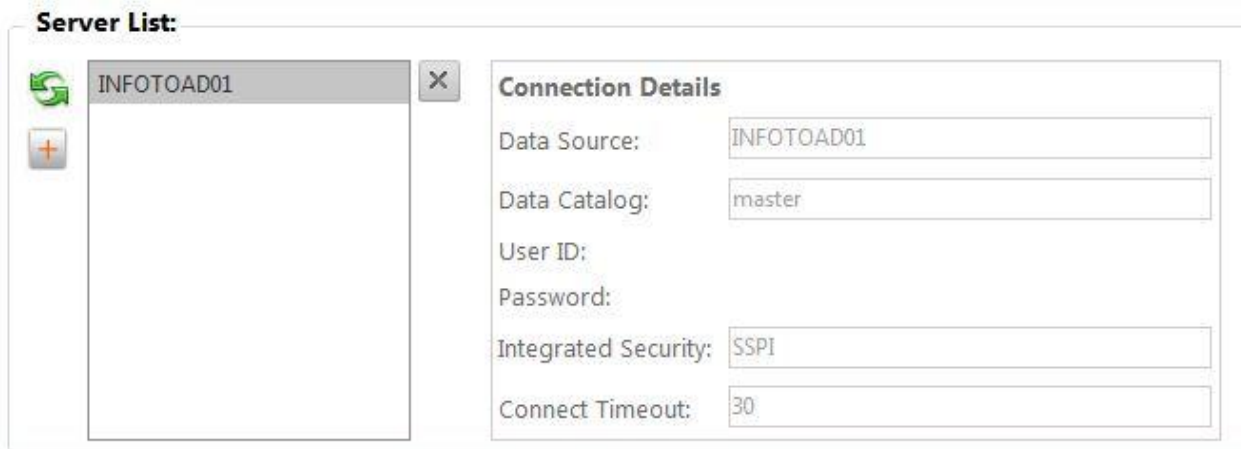






Image 2.

Features and Descriptions

Feature	Description
 Refresh	Click this button to Refresh the list of Servers in the ListView.
 Add Server	Click this button to open the DB Connect Server window and add a new Database Server Connection.

Feature	Description
 <p>Server</p> <p>ListView</p>	<p>This is the ListView for all saved Database Server Connections used by SQL SimpleView.</p>
 <p>Remove Server</p>	<p>Click this button to Remove an existing Database Server Connection from the Server ListView.</p>

Operations

- Click on an existing Server item from the Server ListView to view Connection Details.
Note: *The Connection Details is read only.*

Connection Details

Data Source:

Data Catalog:

User ID:

Password:

Integrated Security:

Connect Timeout:

- Click the **Add Server** button to execute the DB Server Connect window.

DB Server Connect

Server Connect

Server Name: INFOTOAD01\SQLEXPRESS

Authentication:

Use Windows NT Integrated Security

Use a specific User ID and Password:

User ID: []

Password: []

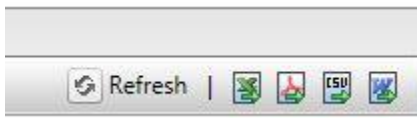
Connection time-out: 30 seconds

Test Connection | Save | Cancel

Note: The **Server Name** dropdown queries for existing SQL Server instances and allows for manually entry. Simply type the name of a Server Instance in the dropdown, if you do not see the Server Name in the list.

FAQs

- Q:** Does the GridView allow Grouping of data?
A: Yes. Just drag and drop a column the **Group Header**, or simply right click the column and select **Group By**.
- Q:** What if I want to extend the functionality of SQL SimpleView?
A: If you would like to customize or extend the functionality, please contact one of our Consultant's at (877) 488-0566 to discuss your requirements. Additional fee's may apply for custom development and consulting services.
- Q:** Are new versions of SQL SimpleView to be released in the future?
A: Yes. We are currently working on enhanced features. Please visit us online to check for future release notes.
- Q:** How is SQL SimpleView licensed?
A: SimpleView is licensed per user. For example, Company A purchases 5 licenses at \$49.95 per license. This would equate to ¹\$249.75 at time of purchase. Renewing annual license ensures you have the latest version builds and email support.
- Q:** How do I export to SQL SimpleView data to other formats?
A: Export to multiple file formats by using the **GridView Export** tool.



- Q:** Does SQL SimpleView allow for Forms Authentication.
A: No. Presently, only Windows Authentication is available. If you would prefer Forms Authentication, please contact one of our Technical Staff Members at (877) 488-0566 to discuss your requirements.
- Q:** Does SQL SimpleView provide support for other enterprise database platforms?
A: Not at this time. Presently, SQL SimpleView only supports the Microsoft SQL Server Database Management System.
- Q:** Is Microsoft Exchange Server required for sending email?
A: No. Any SMTP server will do. You will need to coordinate with your Systems Administrator for details on configuration.
- Q:** Which browsers are compatible with SQL SimpleView?
A: SimpleView has been tested against the following browsers:

¹ Depending on your State, taxes may apply.

- IE 8 and above.
- Google Chrome version 10.0.648.204 and above.
- Firefox version 3.6.15 and above.

10. **Q:** How are Views created and permissions set?

A: You will need to make a request to your Database Administrator for the design/development of SQL Views. Once they are created and permissions set, you will have access to them through SQL SimpleView.

11. **Q:** Should SQL SimpleView be exposed directly to the Internet?

A: Exposing SQL SimpleView directly to the Internet is **not** recommended. Alternatively, you may use the application through a secure VPN. Please check with your Systems Administration for more information.